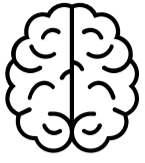
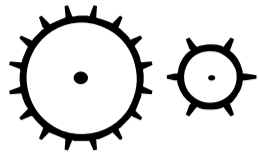


End-to-End Applications

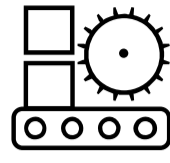
Optimizing the entire product life cycle. Solutions for every stage.



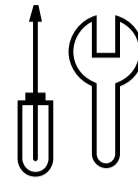
New Product Development



Low-volume Production



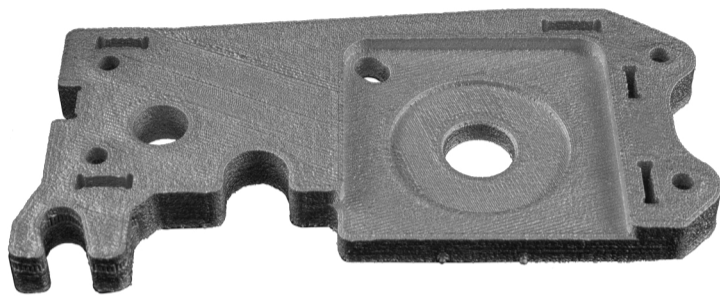
Manufacturing Aids



Spares & Repairs



Supply Chain Optimization

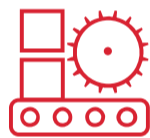
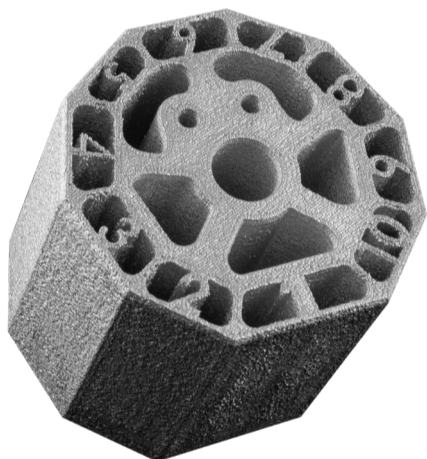


Production Motor Mount Plate

New Product Development

The motor mount in the prior architecture did not meet the requirements for a future planned design iteration. This new design replaced the original sheet metal mounting plate and enabled the engineering team to offset the motor a few millimeters, without having to create new tie bars or subframe components.

PART	PRODUCTION MOTOR MOUNT PLATE
XYZ Dimensions (mm)	150 x 75.85 x 9.53
Print Time	2 Hours
Mass	165.5 Grams
Material	Al 4008

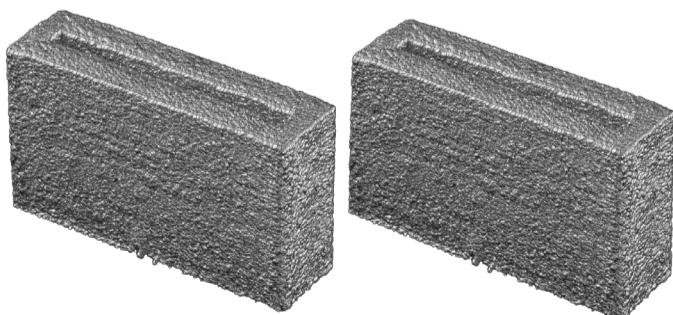


Graphite Heater Inspection Jig

Manufacturing Aids

This 10-sided jig was designed to inspect the ElemX print head graphite heater slots produced on the Xerox manufacturing line. For precise inspection, the jig orients each slot directly perpendicular with the microscope; therefore requiring accurate dimension tolerances. This particular jig was designed and printed several times in a 24-hour period.

PART	GRAPHITE HEATER INSPECTION JIG
XYZ Dimensions (mm)	67.9 x 50 x 63
Print Time	5 Hours
Mass	260 Grams
Material	Al 4008



Interlock Actuator Cap

Spares & Repairs

An important switch used by our Technical Services community needed to be redesigned to be RoHS 3 compliant. In doing so, the guides were removed, resulting in worn interlocked actuators that periodically slip off the switch plunger. The technical service representatives reported difficulty using this new switch design in their troubleshooting tasks, stemming directly from the interlock changes. The cap was designed to fit on top of the actuator, engaging the switch every time.

PART	INTERLOCK ACTUATOR CAP
XYZ Dimensions (mm)	34.5 x 9.9 x 20
Print Time	22 Minutes
Mass	22 Grams
Material	Al 4008



I am excited at the potential the ElemX offers to our Innovation team. Now that I have this expertise, I can create quick or temporary field fixes instead of producing injection molds for gears in the future.

Spiros Kostarellis,

Xerox Service Program Manager

